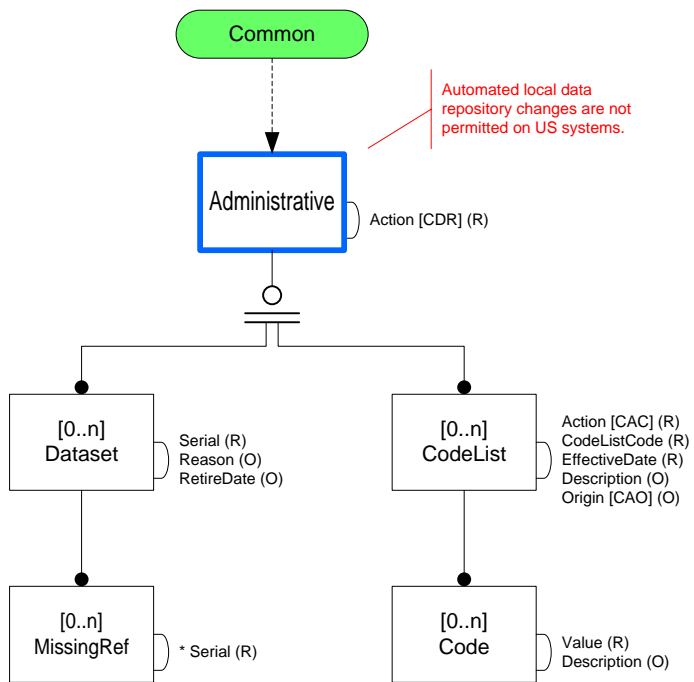
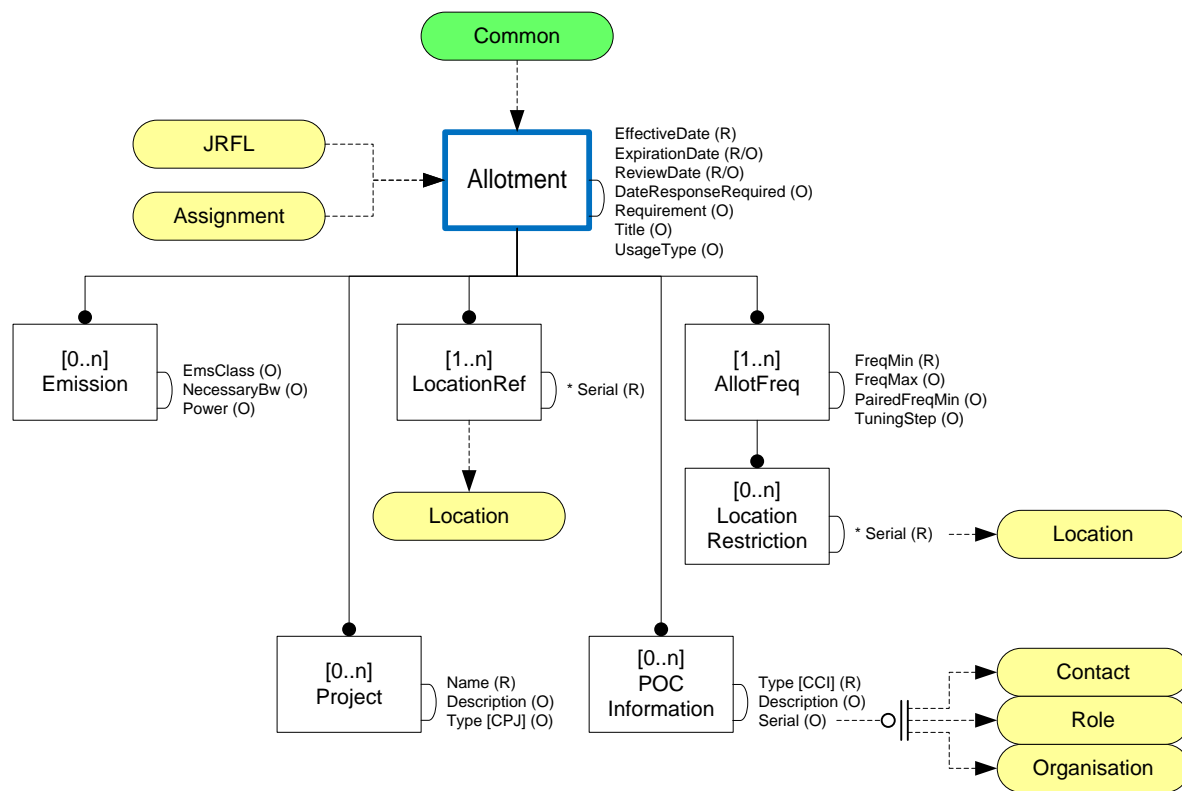
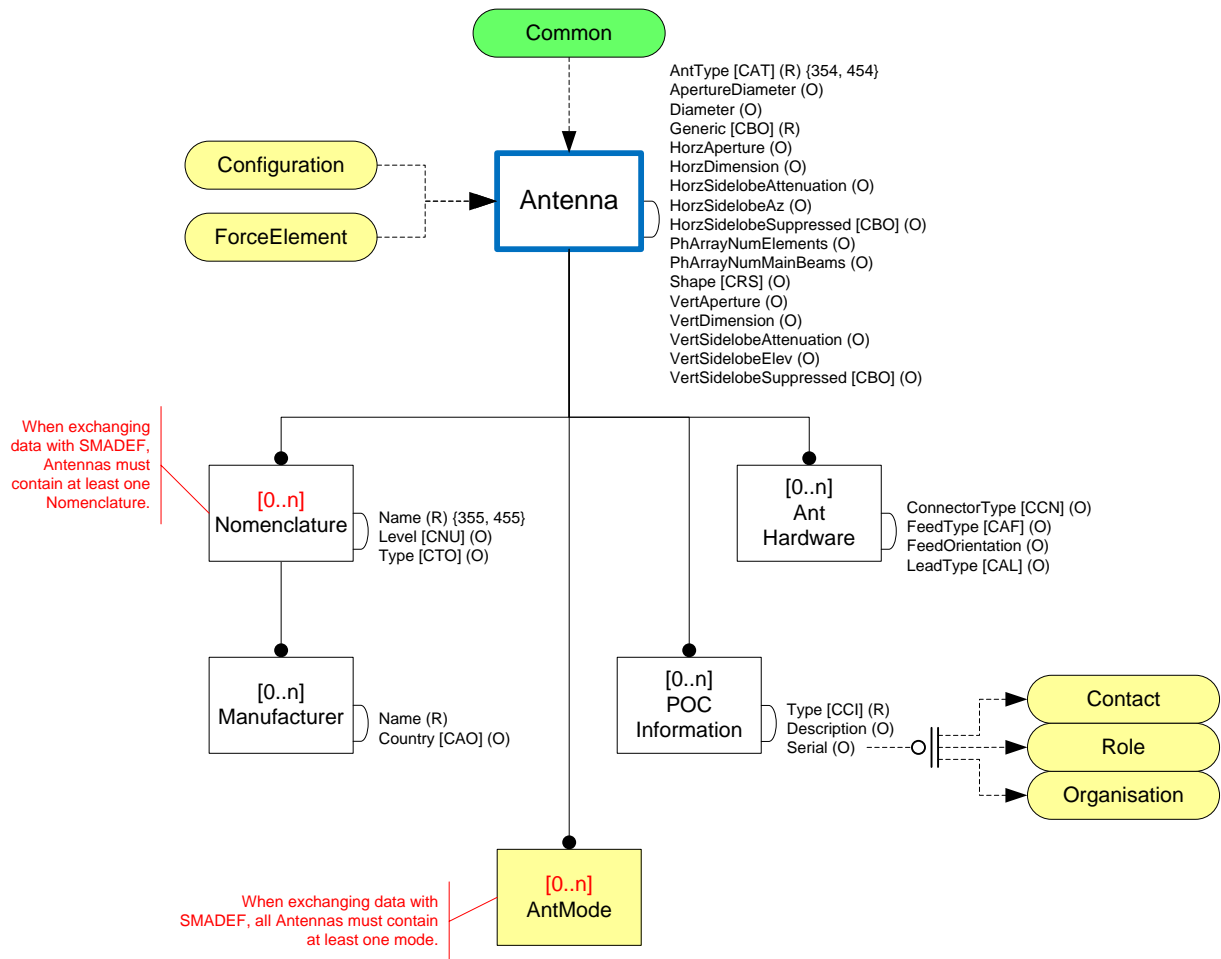


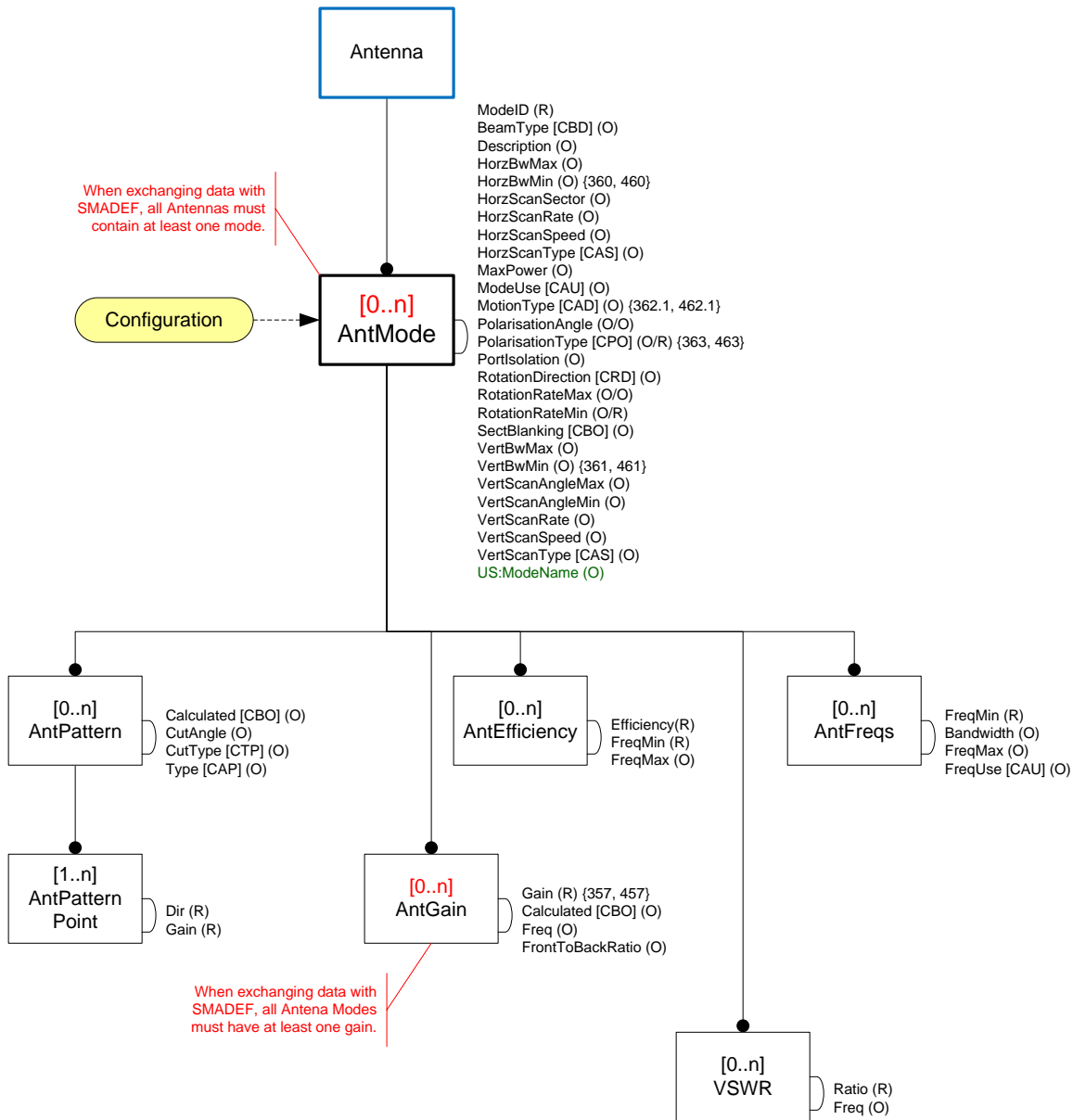
SSRF Version 3.0 Diagrams

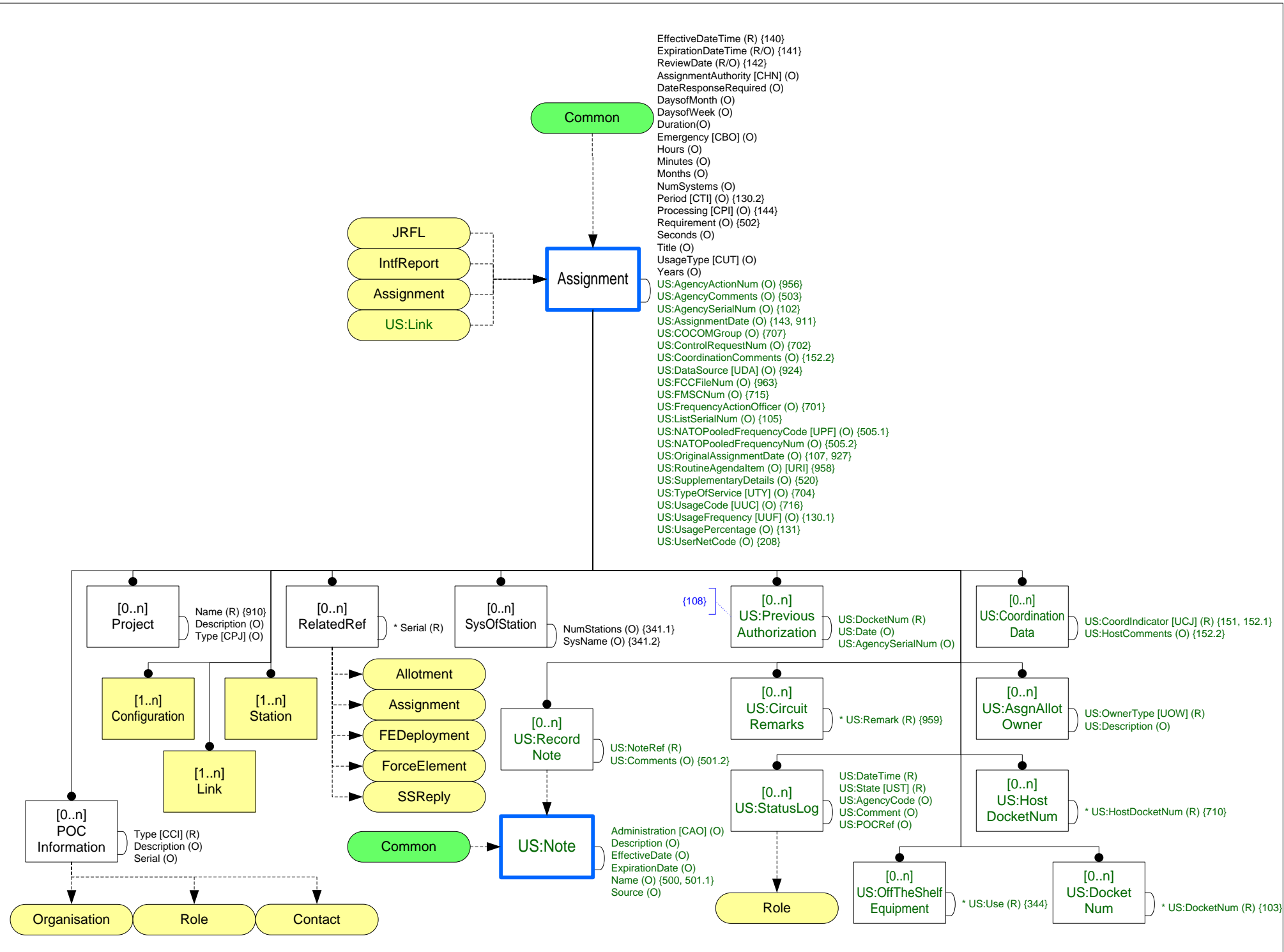
<u>Dataset</u>	<u>Page</u>	<u>Dataset</u>	<u>Page</u>	<u>Dataset</u>	<u>Page</u>
Contents	1	FEDeployment	11	RxMode	21
Administrative	2	ForceElement	12	Satellite	22
Allotment	3	IntfReport	13	SSReply	23
Antenna	4	JRFL	14	SSRequest	24
AntMode	5	Link	15	Station	25
Assignment & Note	6	Location	16	TOA & Channel Plan	26
Common	7	Organisation	17	Transmitter	27
Configuration	8	Receiver	18	TxMode	28
Contact	9	RFSystem	19	Standard Element Template	29
ExtReference	10	Role	20	User Guide to Drawings	30

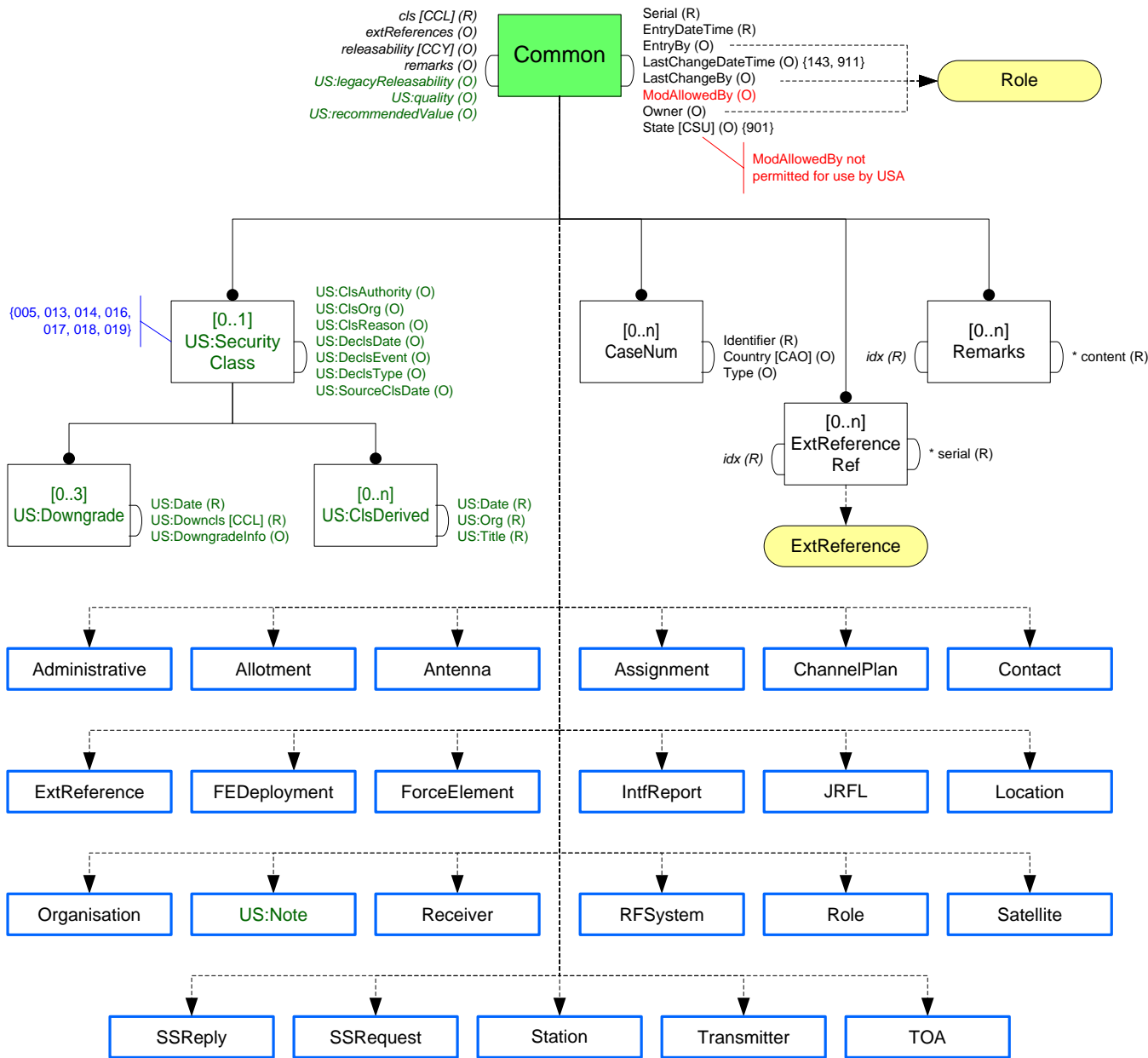


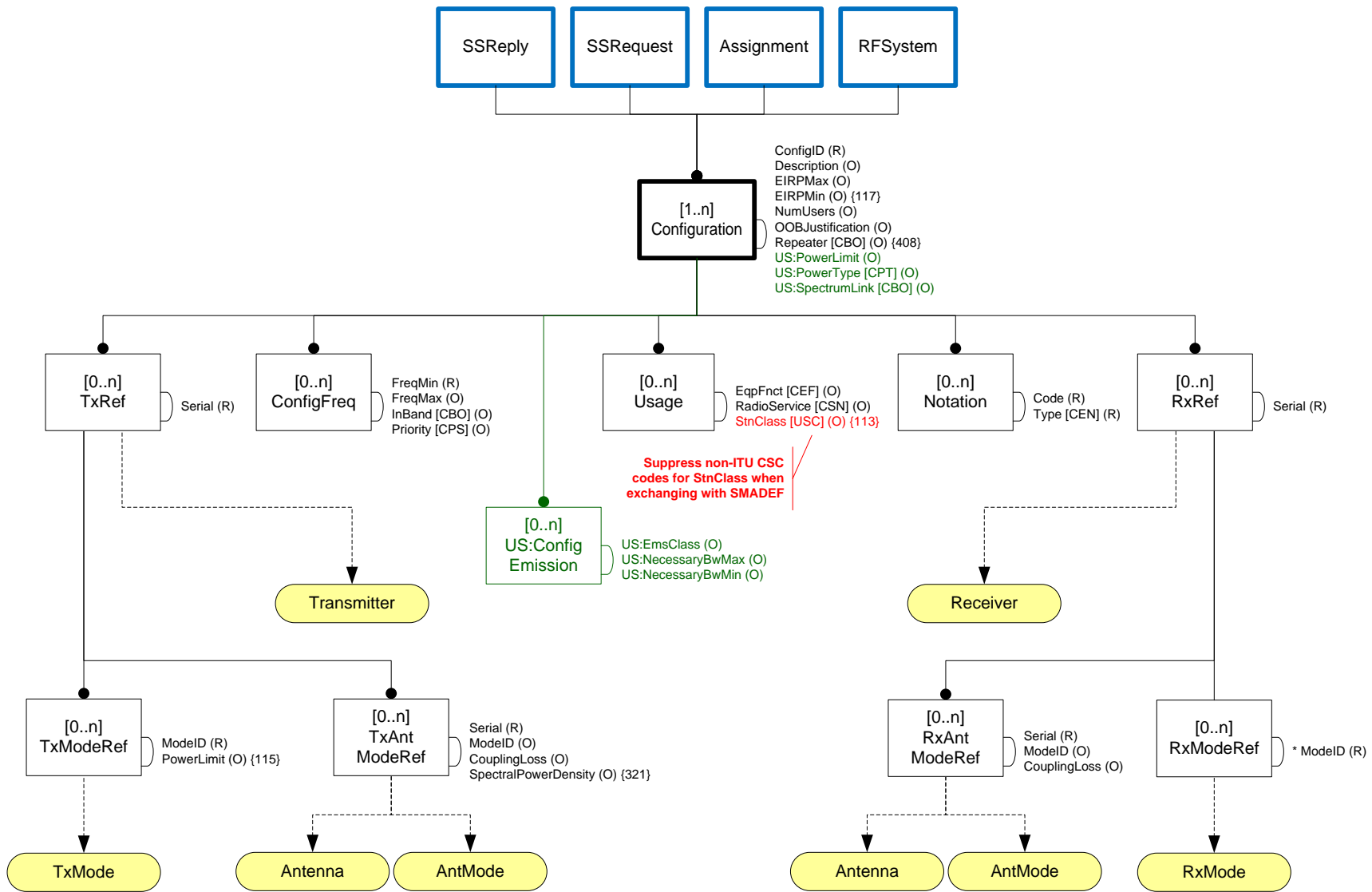


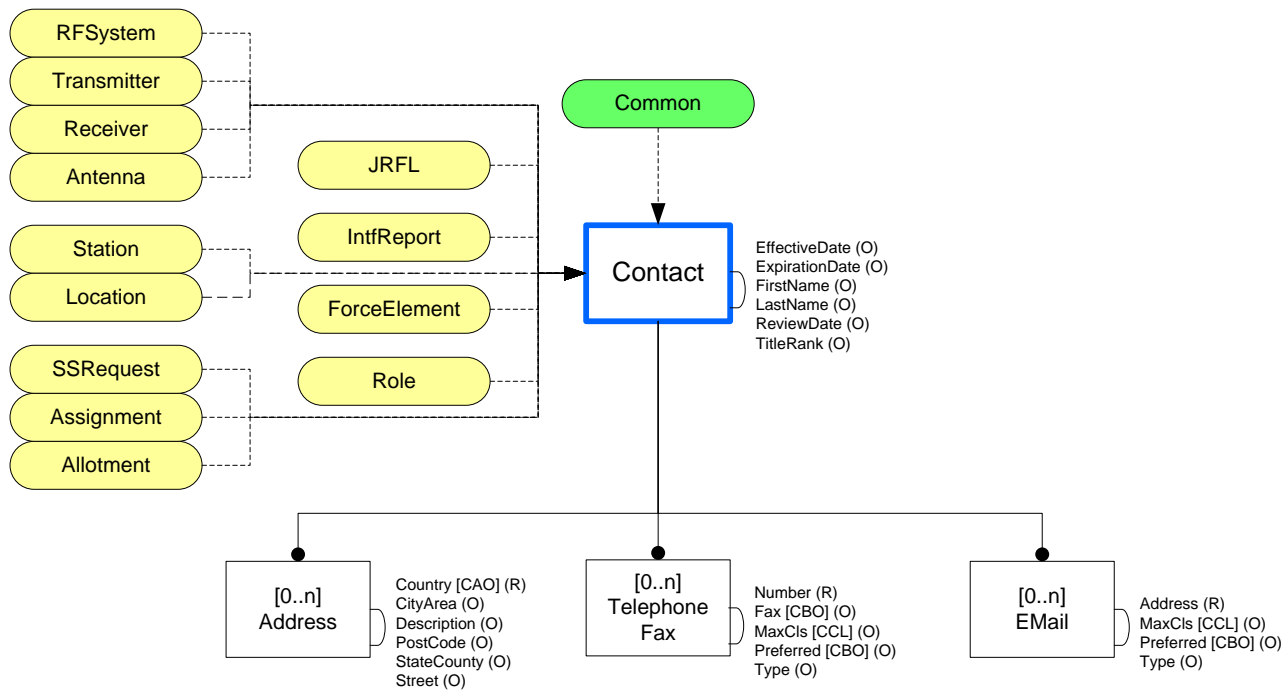


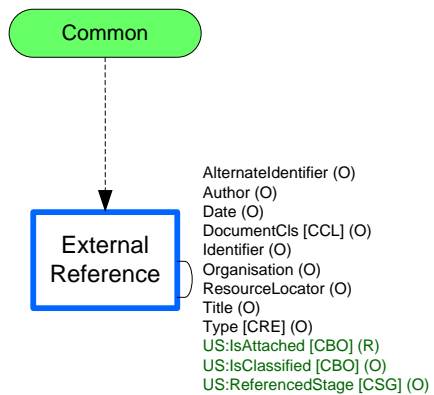


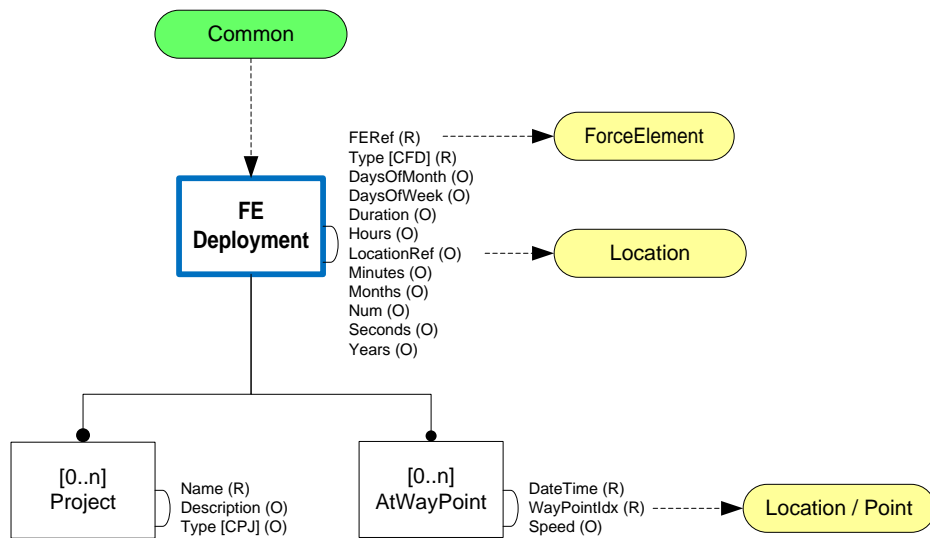


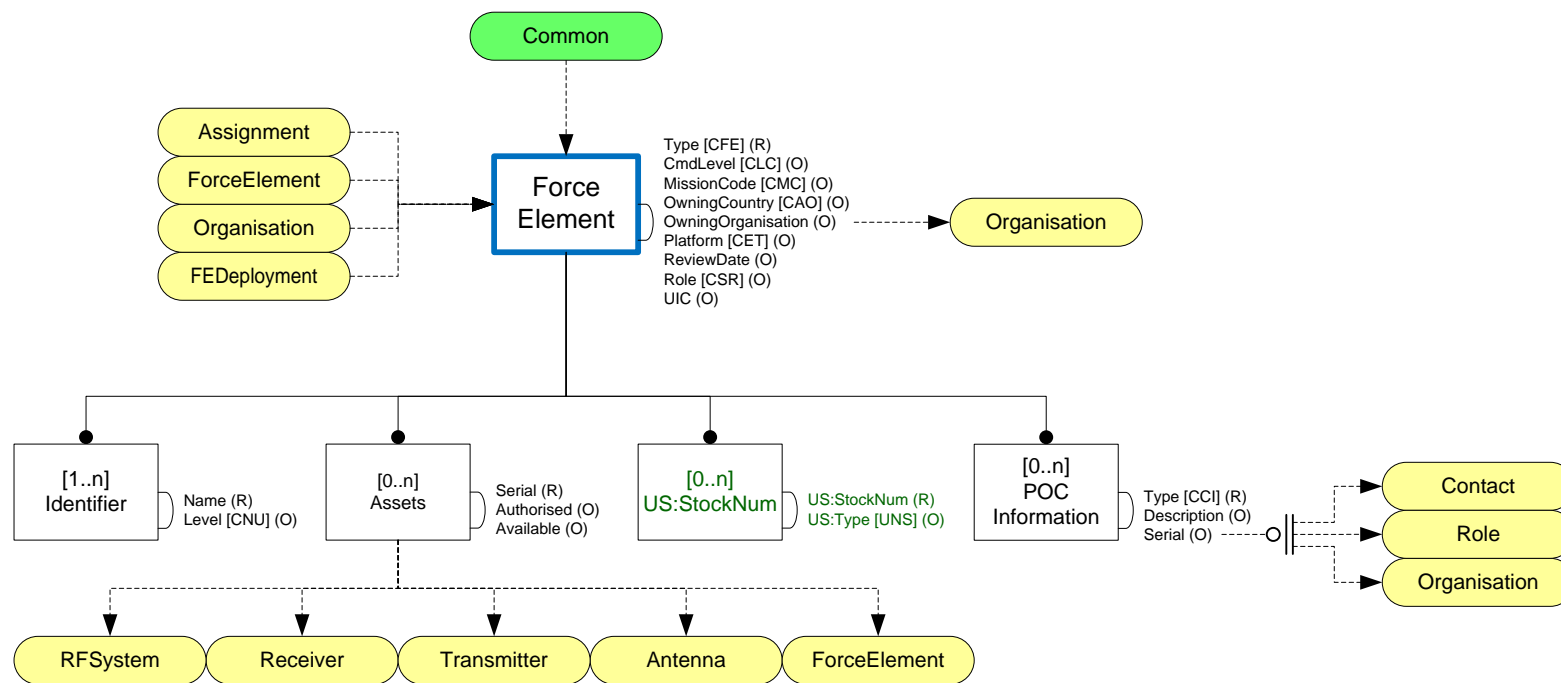


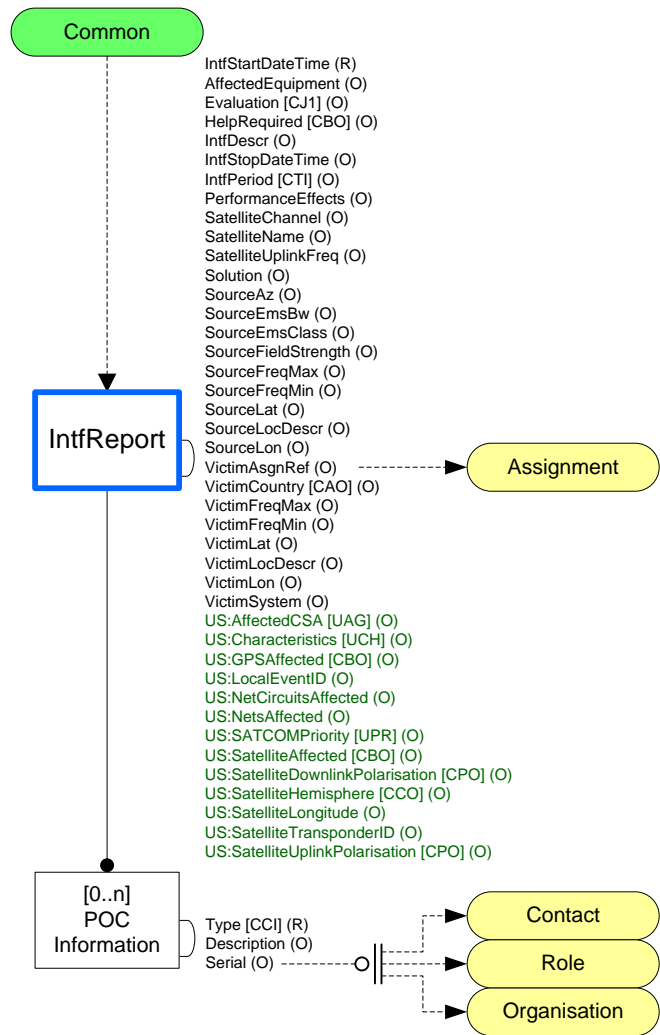


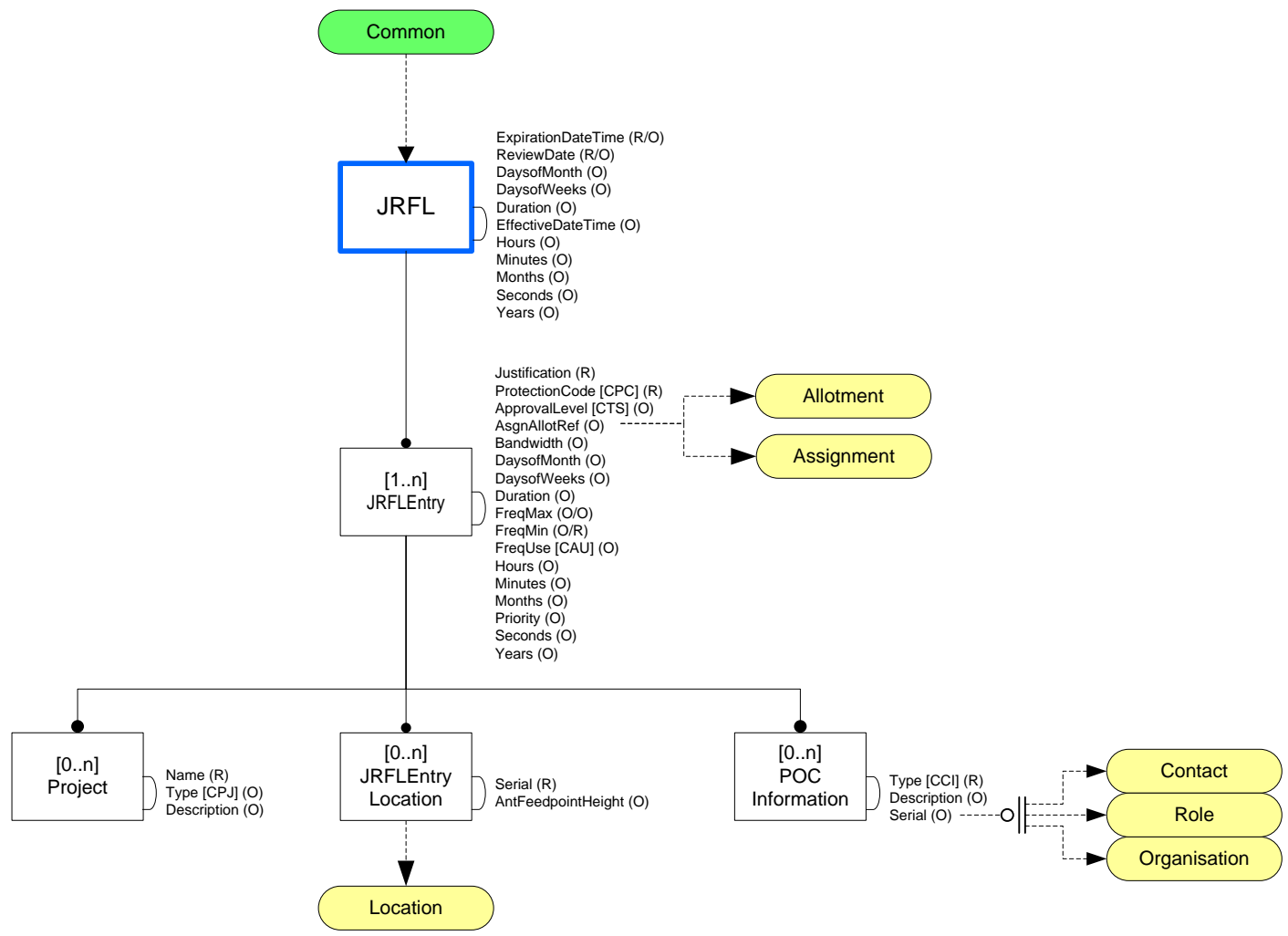


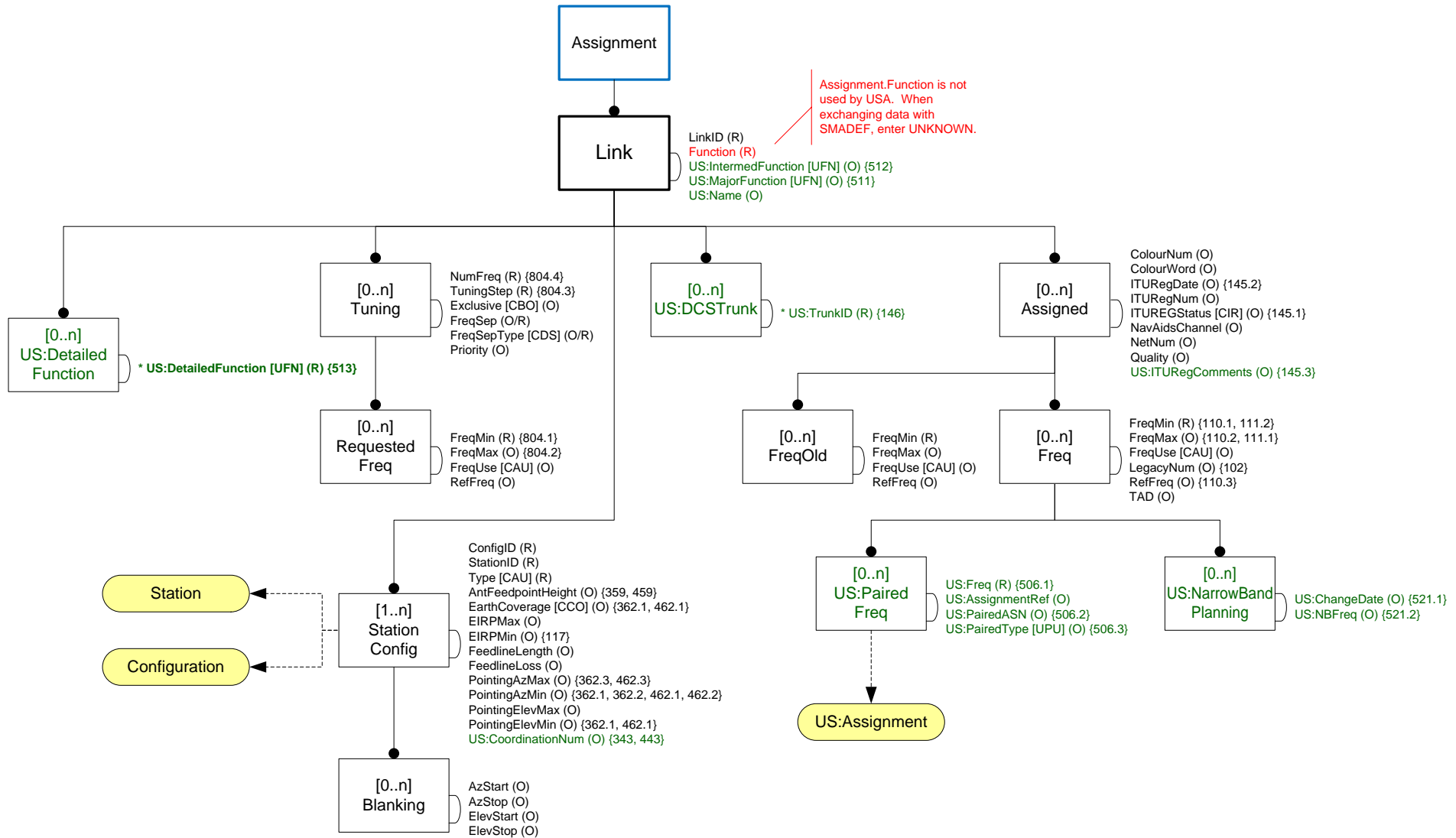




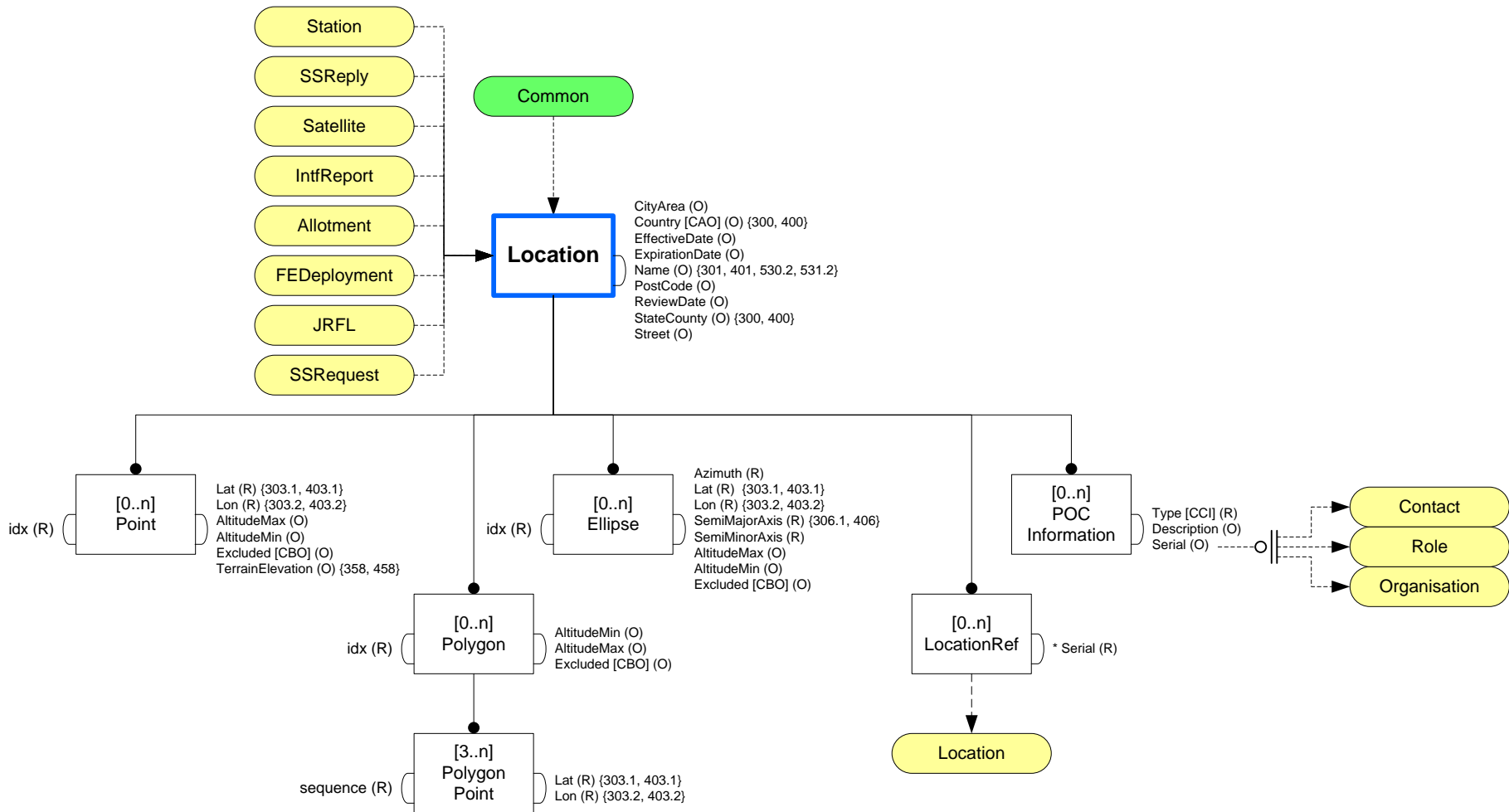


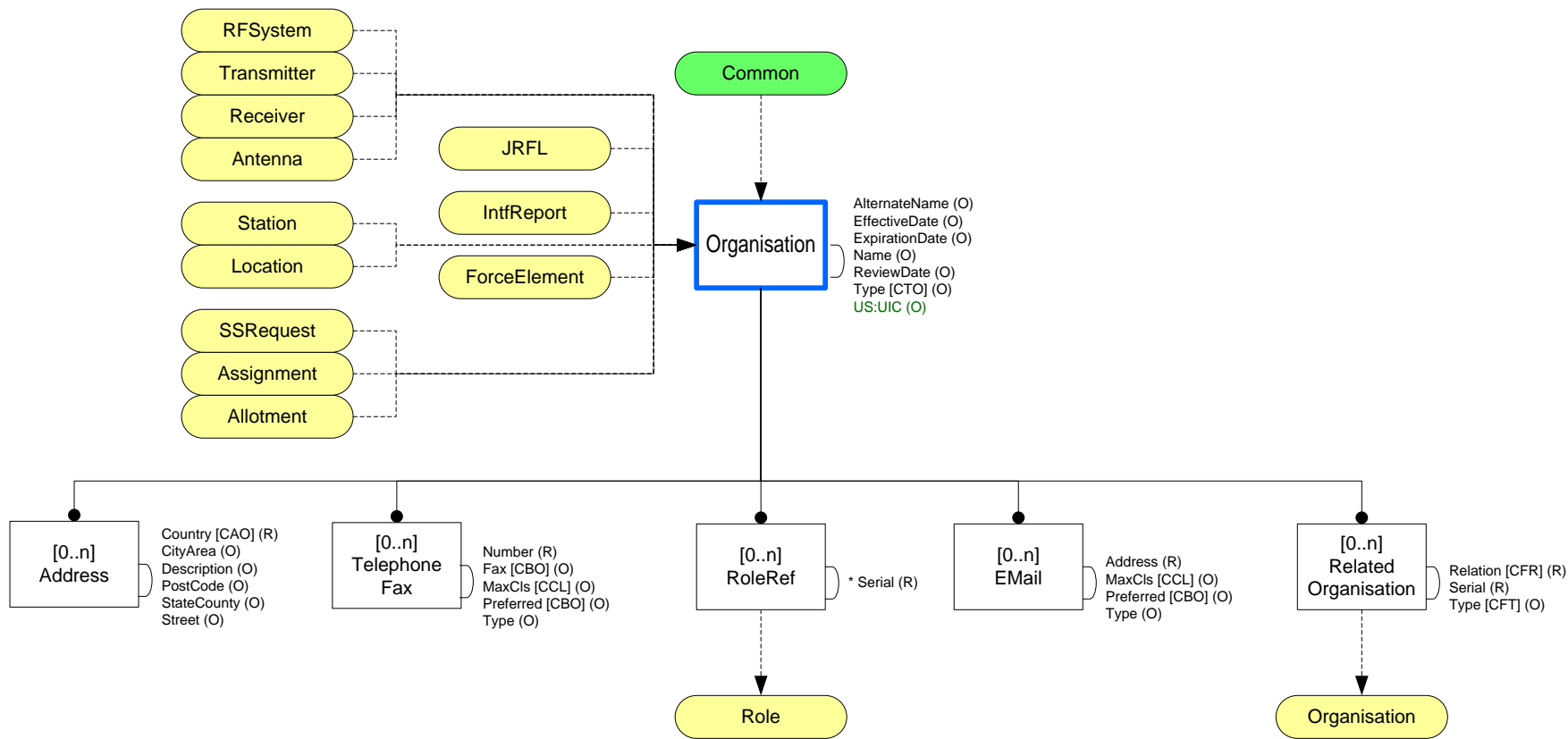


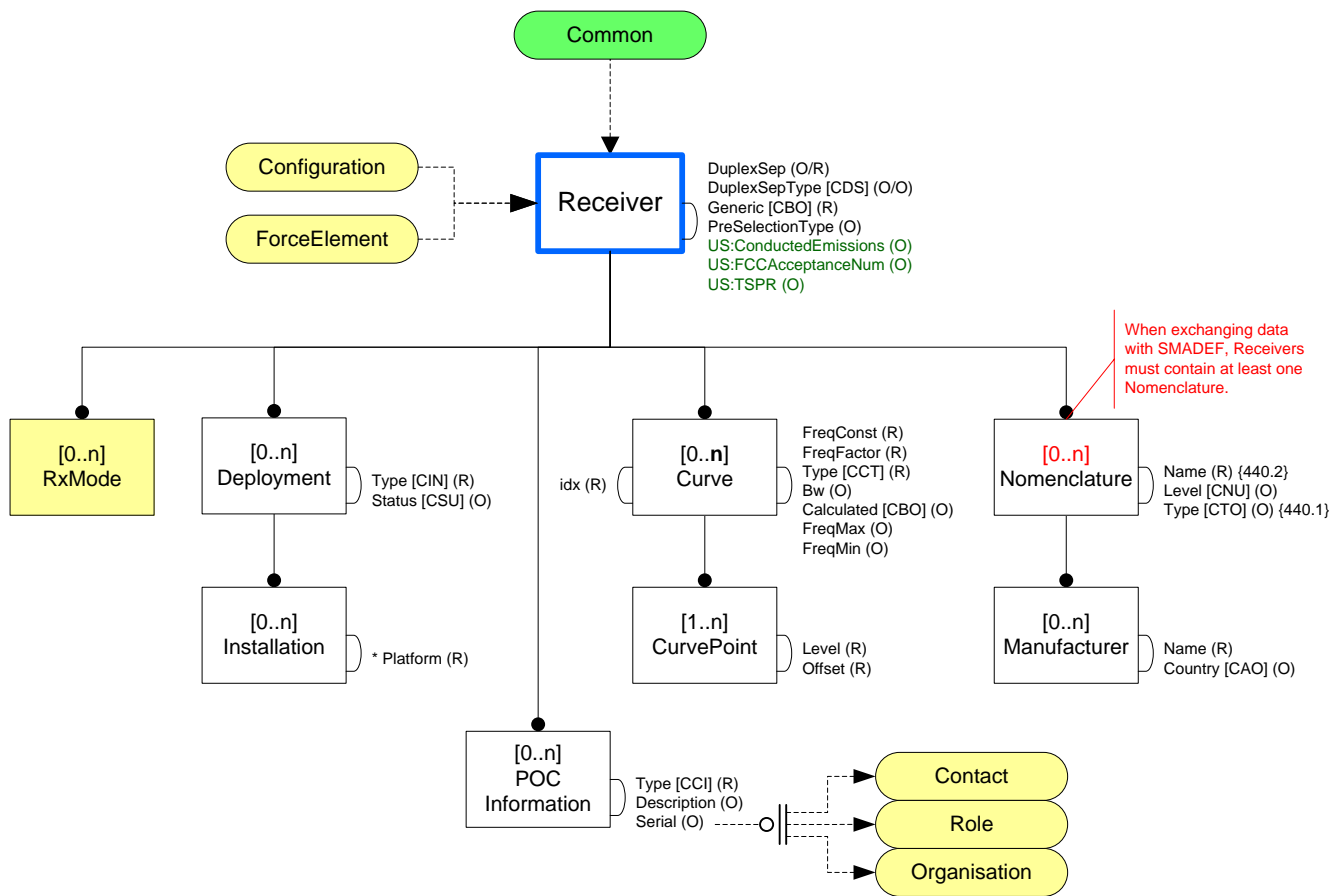


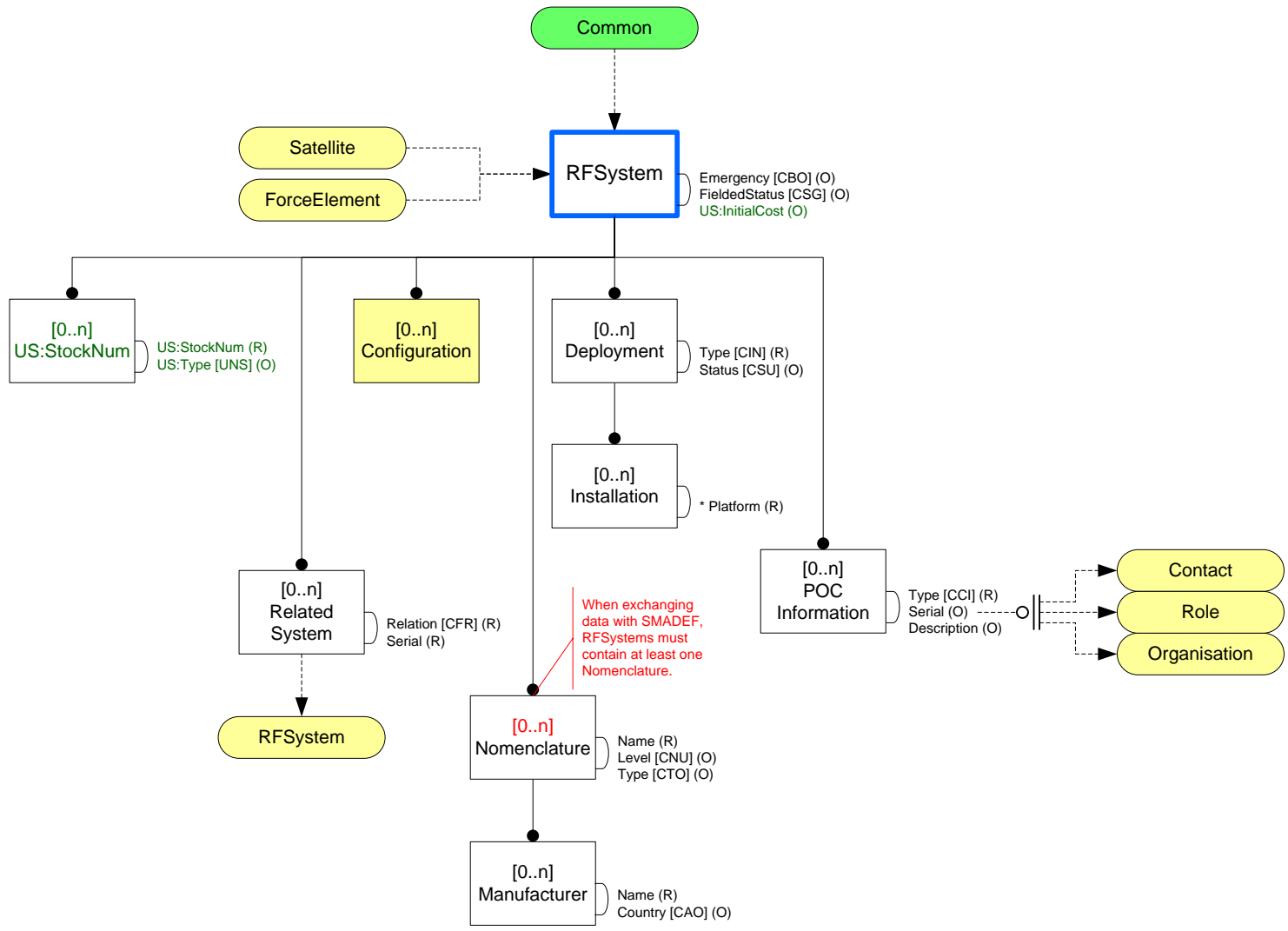


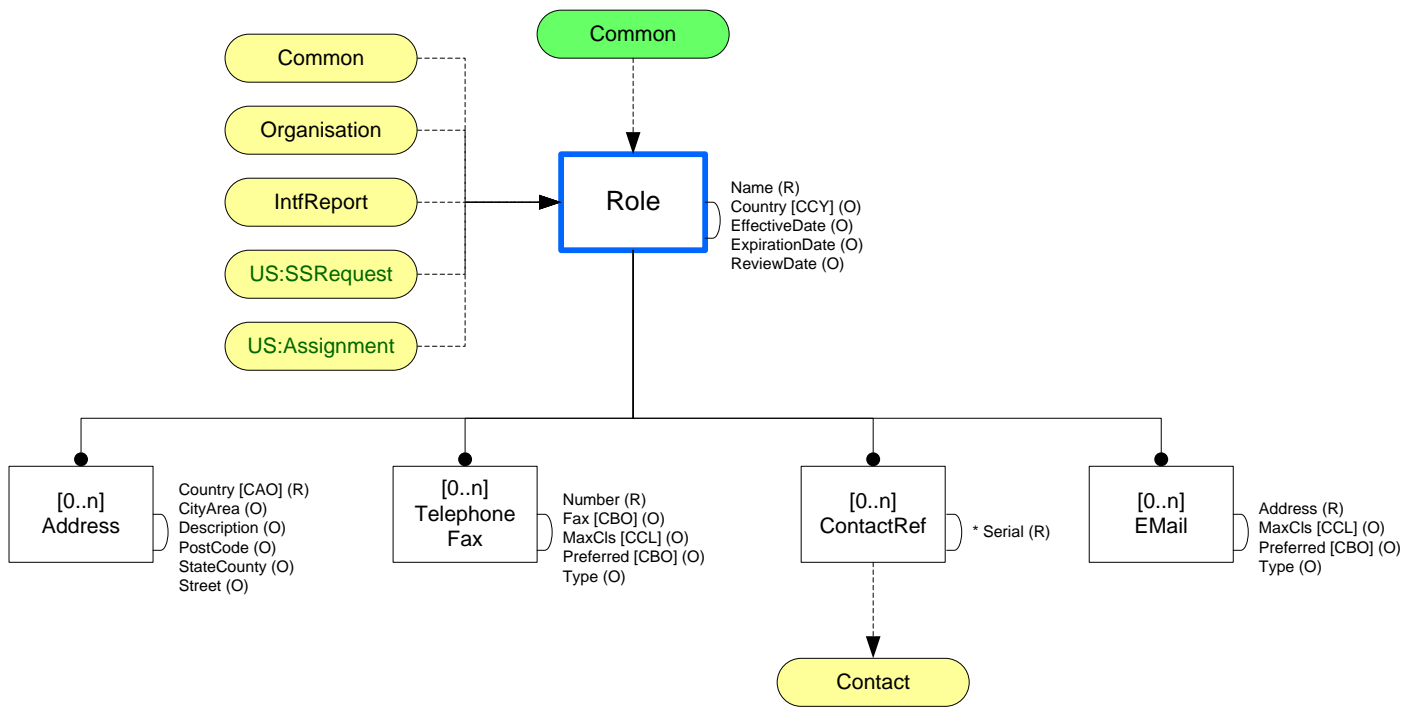
Assignment.Function is not used by USA. When exchanging data with SMADEF, enter UNKNOWN.

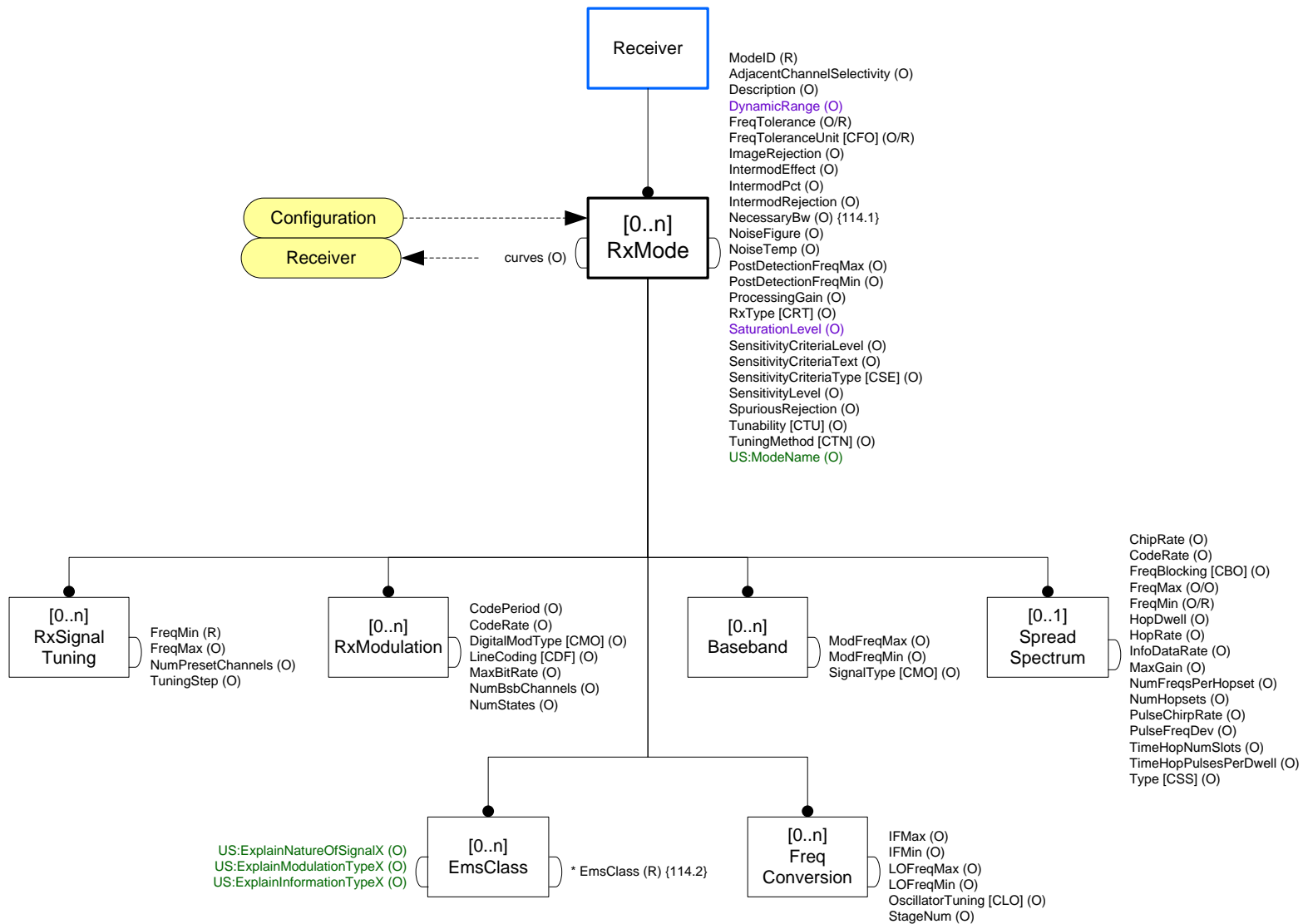


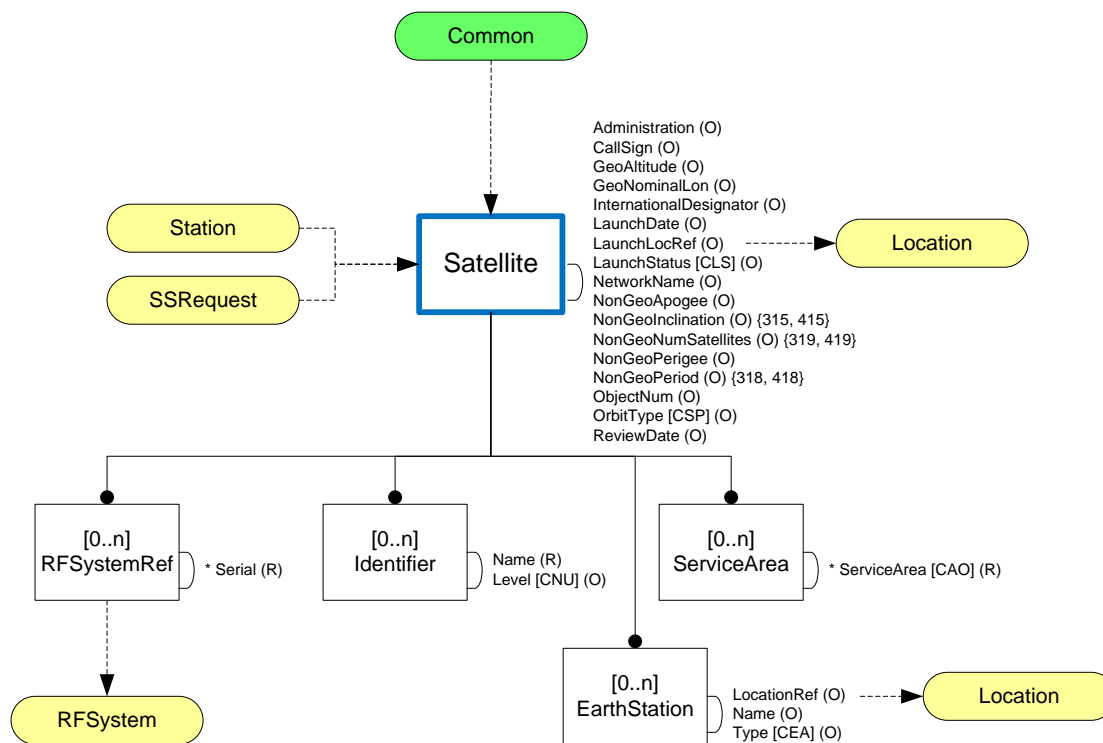


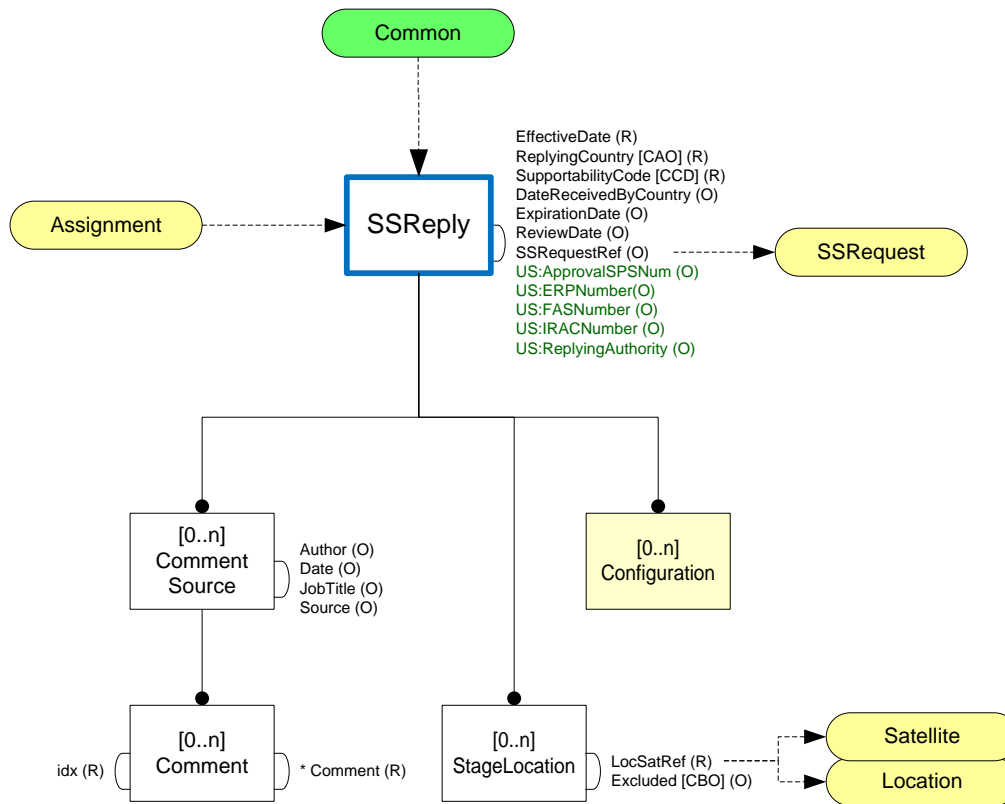


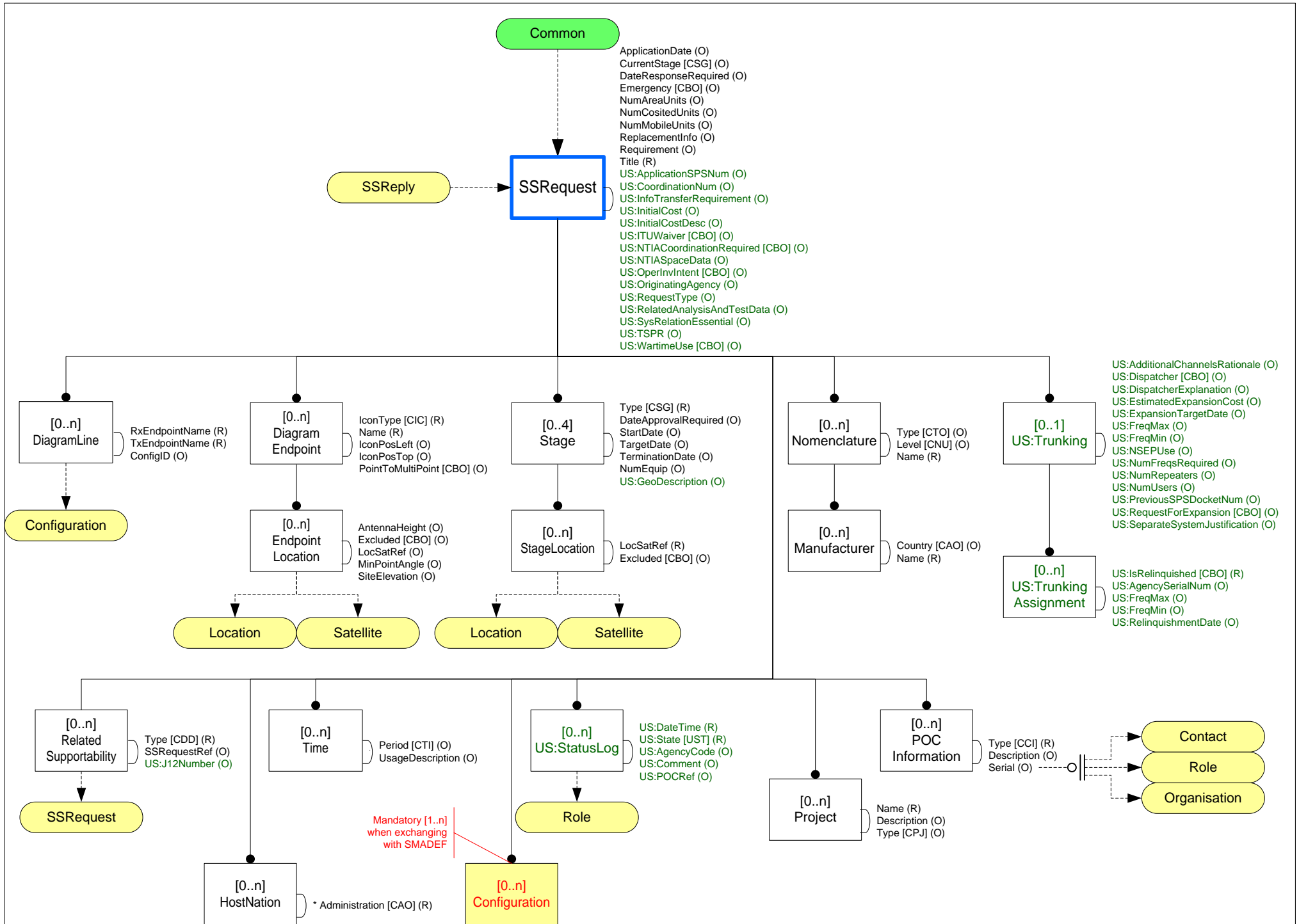


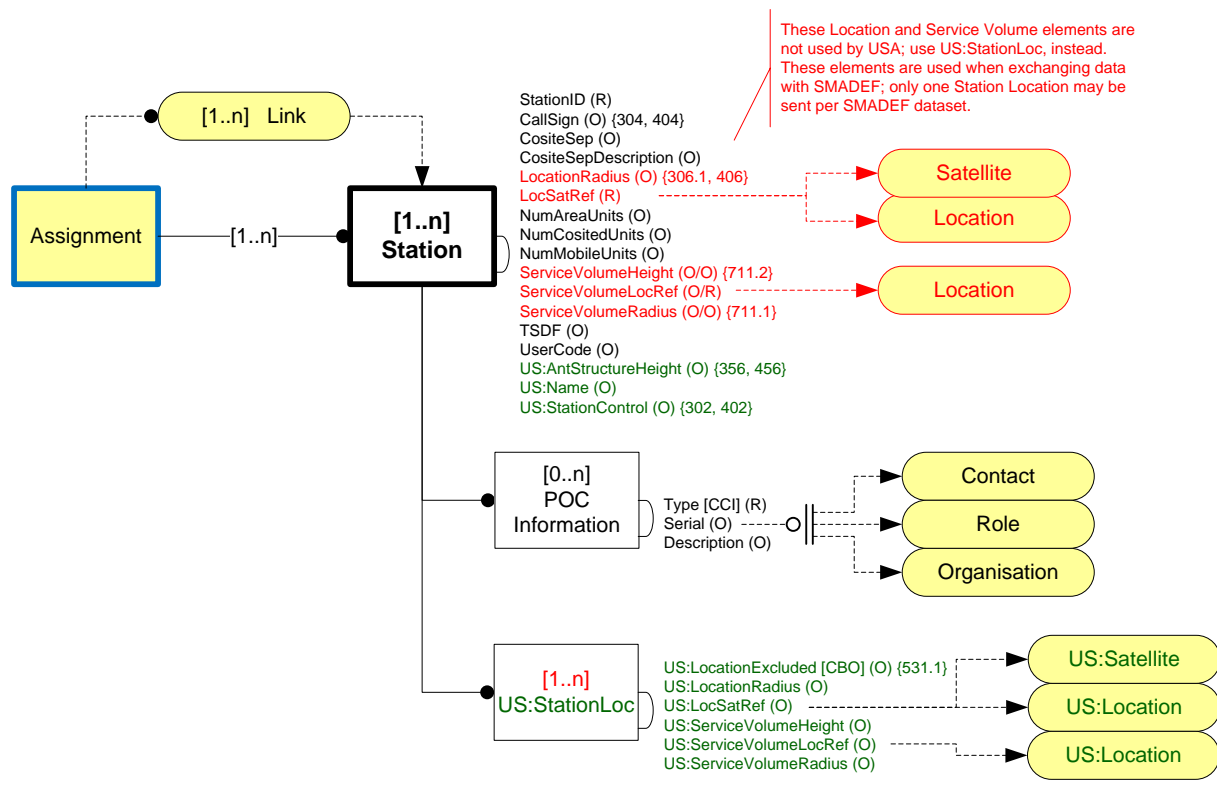


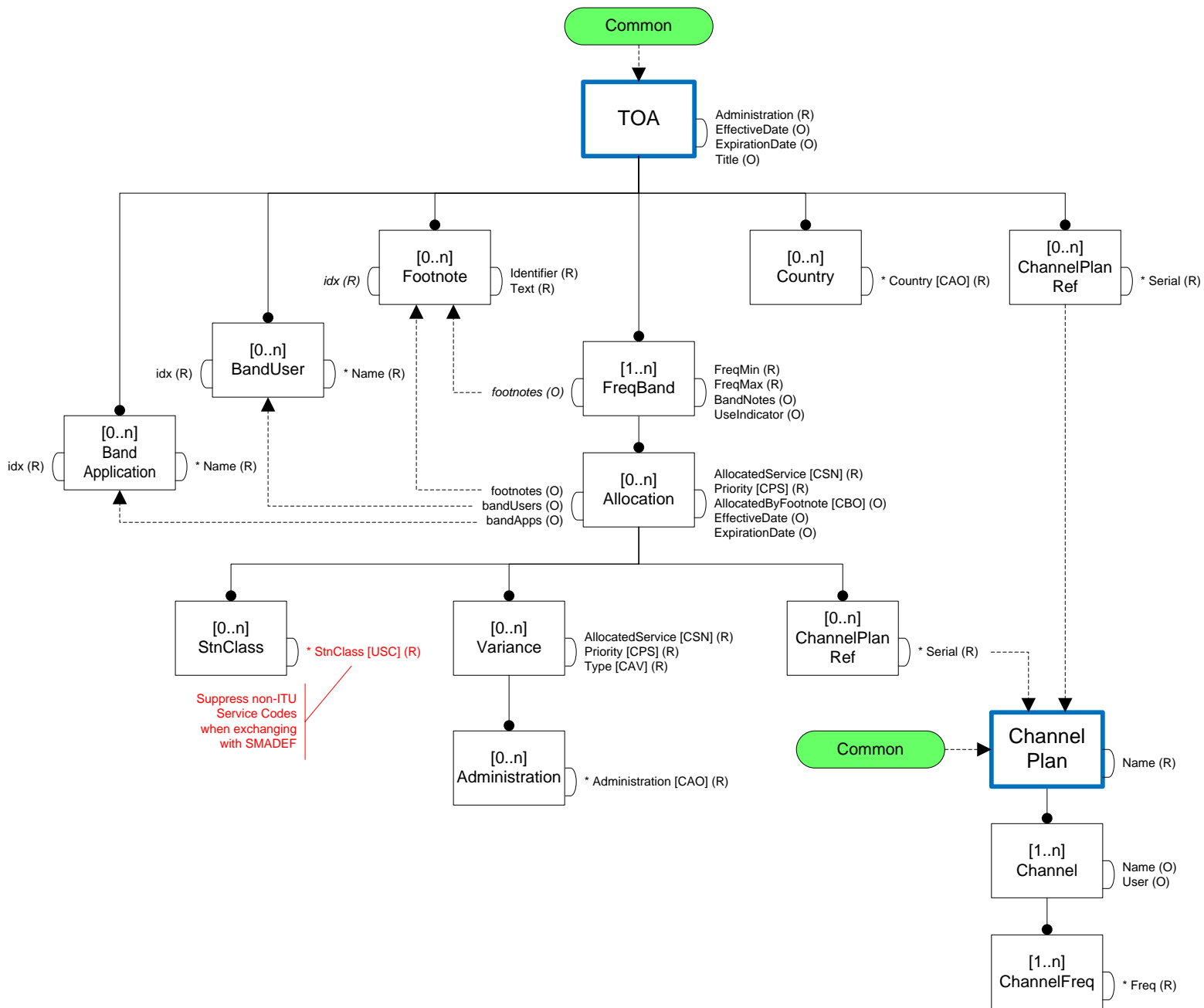


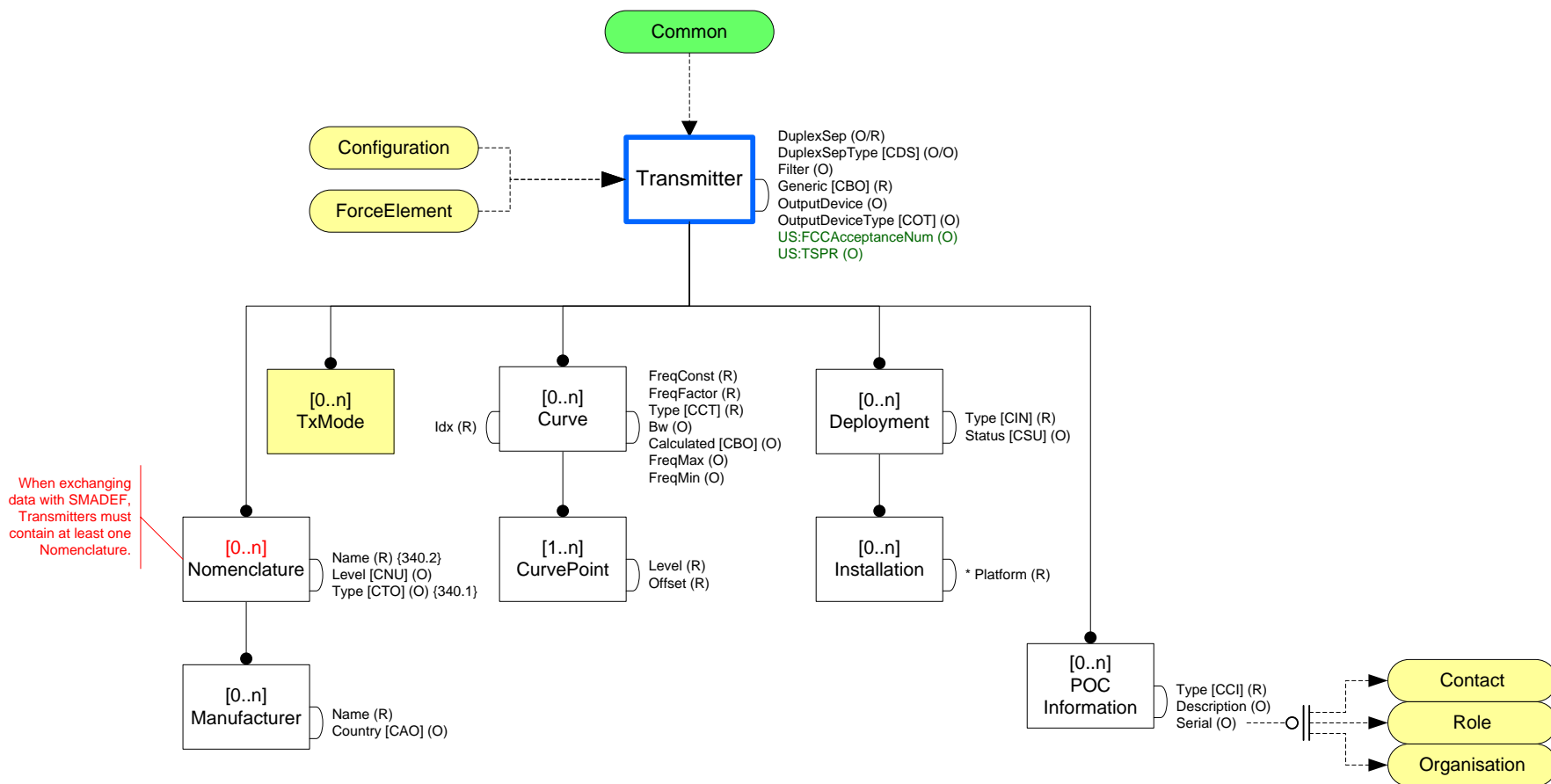


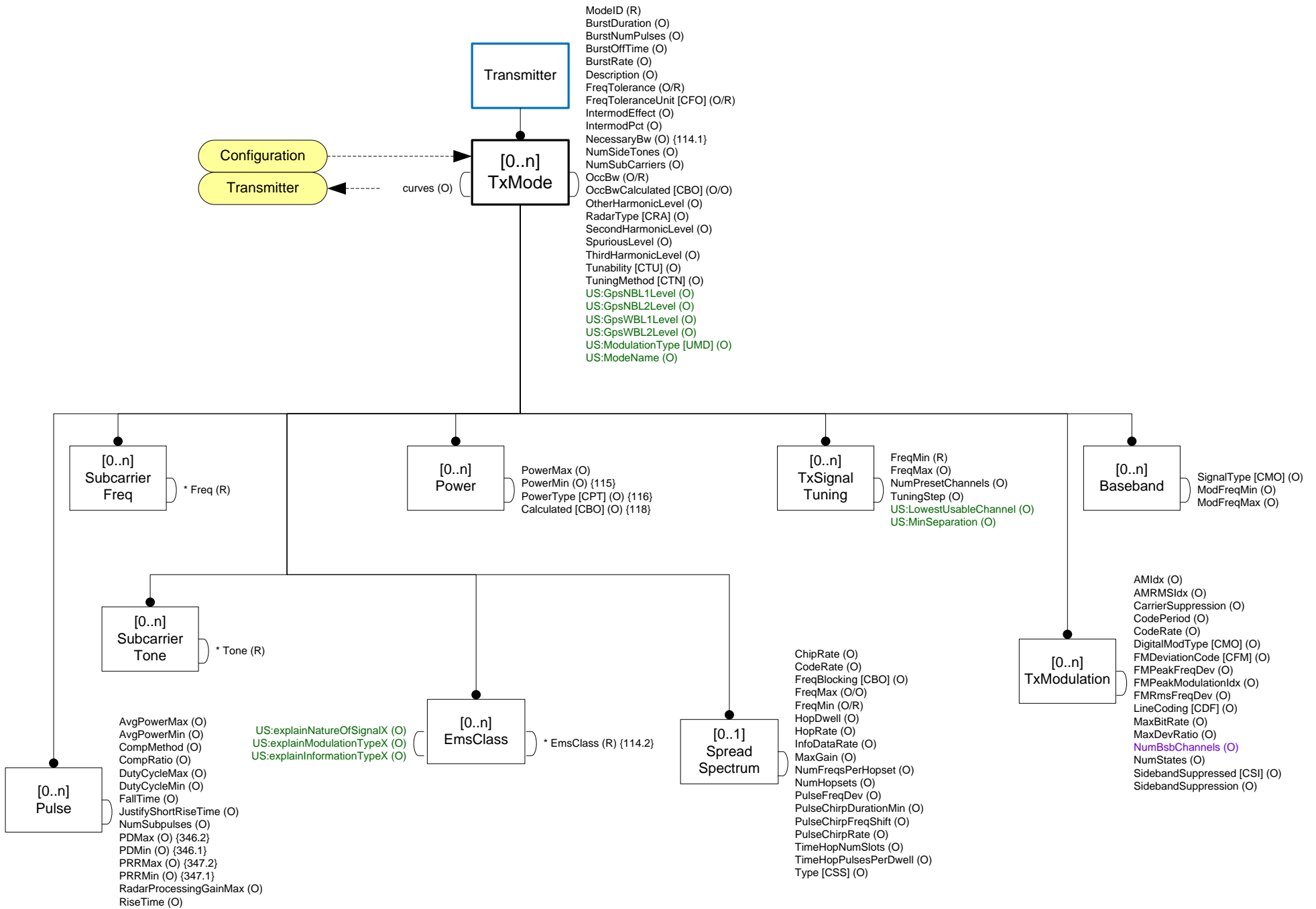












Applying the Standard Element Template

1. Element model attributes are applied to each element that is a simple element. Element attributes only apply to the element content, not to other attributes.
2. If attributes should remain the same across multiple simple elements, business process rules will ensure consistency. For example, First Name and Last Name, points on the same curve, and the frequencies in a frequency range have the same classification and handling information.

Standard Element Model -- Each simple element will have:

Attribute Name	Type	Comment
cls [CCL] (R)	Single	Security classification of simple elements, overall dataset class of Level 2 dataset
remarks (0)	List	RemarkIdx, from level 3 Common data construct, separated by whitespace
extReference (0)	List	extReferenceIdx from level 3 Common data construct containing all external references used in the dataset, separated by whitespace
US:quality (0)	Single	Choices TBD: Outlier, Non-CodeList,
US:recommendedValue	Single	The manually entered, automatically calculated or statistically derived probable correct value, for data items with negative quality entries
US:availability (0)	Single	Choices: UNKNOWN, N/A and NAVAIL. Element will most likely be empty.

Standard Element Model -- Each Dataset will have:

Releasability (0)	List	CCY code list for constructing "REL TO" strings - at Level 2 Dataset level, only
US:legacyReleasability	Char(250)	May contain decoded RL code table code(s) or other entries from the originating system (SCS, EL-CID, JETS)

- "SUPP" {502}
- "RMKS" {503}
- "DESCR" {520}

